



**VIKING 48'
CONVERTIBLE**

SATISFY YOUR NEED FOR SPEED.

 **viking**
yachts

THE 48' INTERIORS OFFER YOU THE ULTIMATE LUXURY: CHOICE.



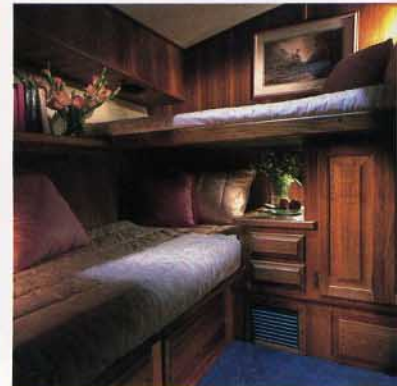
THE LUXURY MODEL INCORPORATES AN L-SHAPED LOUNGE/DINETTE AND GALLEY ON THE SAME LEVEL (PLAN C).



THE ONE-STEP-DOWN GALLEY/DINETTE AFFORDS THE SALON PRIVACY WITHOUT ISOLATING THEM FROM THE REST OF THE PARTY (PLAN A).



THE ONE-STEP-DOWN DINETTE OF THE TWO-STATEROOM (PLAN A) FEEDS THE ENTIRE CREW AND CONVERTS INTO A DOUBLE BERTH.



THE MAN-SIZED UPPER AND LOWER CROSSOVER BUNKS OF THE GUEST STATEROOM CREATE A SENSE OF SPACE AND WARMTH.



A HUGE, WALK-AROUND QUEEN-SIZED BED, GENEROUS TEAK, CEDAR-LINED CLOSETS AND LOCKERS—ALL MAKE THE CAPTAIN AND HIS MATE FEEL RIGHT AT HOME.

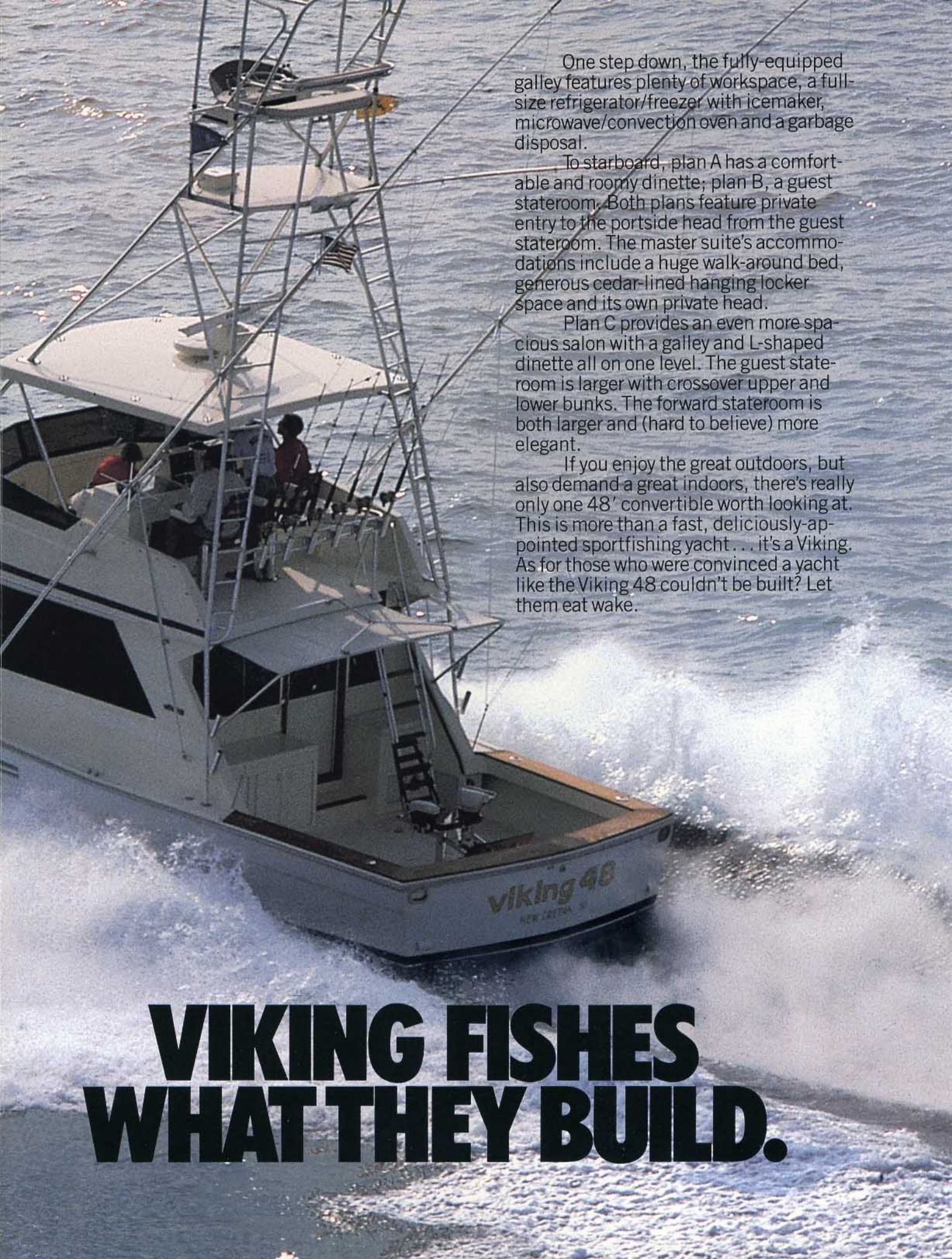
Because the men of Viking fish what they build, the 48's 145 square foot cockpit comes fishing-ready, with recessed fishwells in the sole and, up forward, a bait prep station, tackle locker and freezer.

WHAT THEY CALL OPTIONS VIKING MAKES STANDARD.

The 48's professional bridge can seat the entire crew in comfort and style. The helm features Viking's systems monitoring panel, a chart flat, and expansive storage space. The sleek optional hardtop provides an overhead console with room for additional electronics.

The opulent salon boasts hand rubbed teak woodwork, and L-shaped lounge, rich carpeting with decorator accents and an entertainment center with TV, VCR and AM/FM/cassette stereo.





One step down, the fully-equipped galley features plenty of workspace, a full-size refrigerator/freezer with icemaker, microwave/convection oven and a garbage disposal.

To starboard, plan A has a comfortable and roomy dinette; plan B, a guest stateroom. Both plans feature private entry to the portside head from the guest stateroom. The master suite's accommodations include a huge walk-around bed, generous cedar-lined hanging locker space and its own private head.

Plan C provides an even more spacious salon with a galley and L-shaped dinette all on one level. The guest stateroom is larger with crossover upper and lower bunks. The forward stateroom is both larger and (hard to believe) more elegant.

If you enjoy the great outdoors, but also demand a great indoors, there's really only one 48' convertible worth looking at. This is more than a fast, deliciously-appointed sportfishing yacht... it's a Viking. As for those who were convinced a yacht like the Viking 48 couldn't be built? Let them eat wake.

**VIKING FISHES
WHAT THEY BUILD.**

Viking craftsmen sand each hull layer after curing; this maximizes adhesion in the laminate and keeps the composite void-free. Use of high-tech coring above the waterline adds to the highest possible strength-to-weight ratio.

Beneath the surface, structural integrity is enhanced by Viking's unique hull reinforcement system. Viking engineered an eggcrate-like grid of cant strip stiffeners where the bulkhead and stringers intersect, which is then fiberglass encapsulated and bonded to the hull.

The 48's brawny turbo-diesels are attached to wide, flanged steel beams, which are securely bolted to dedicated bulkheads. This method does more than disperse loads evenly throughout the hull structure; it actually makes the hull *stronger*.

Contrary to popular opinion, the Viking 48' Convertible proves that you *can* have your cake and eat it, too. Some competitors think it's impossible to create a fast, handsome yacht that can satisfy a demanding sportfisherman *and* be just as adept at high-style entertaining.

Viking knows better. Their entire convertible line is proof positive. No design is complete until the new yacht is ready to join the ranks of the fastest, fishing-est family of luxury convertibles available.

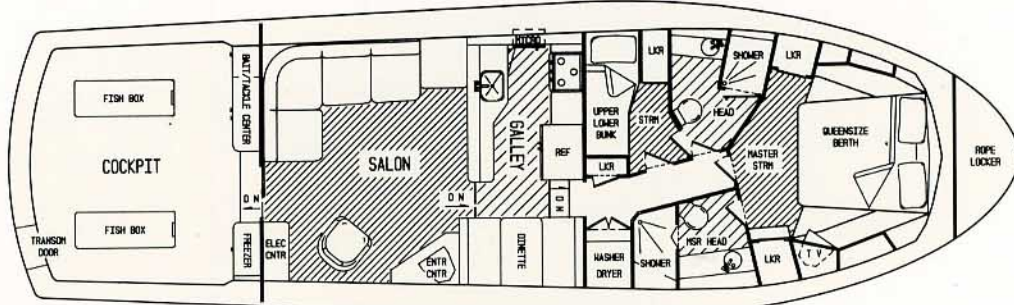
Since her introduction, the 48' has made waves like no other in her size range. Her performance is awe-inspiring and unapproachable—beating all comers hands down. All similarly powered competitors are about four knots off the 48's lightning pace. This yacht is clearly a rocketship; but why?

Her speed is in large measure due to a fine-tuned version of Viking's unique, proven hull formula—a crisp forefoot, providing a clean entry for the efficient, high speed aft planning fairbody. Reversed radius chines complete the system by providing outstanding tracking and stability.

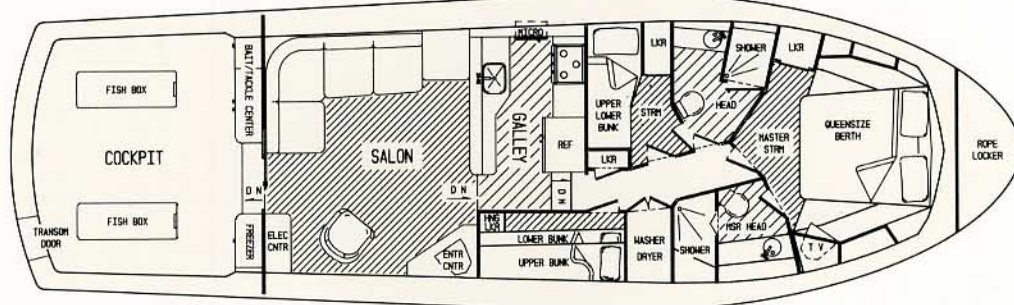


**THERE IS NO NEED
TO SACRIFICE LUXURY
FOR PERFORMANCE.**

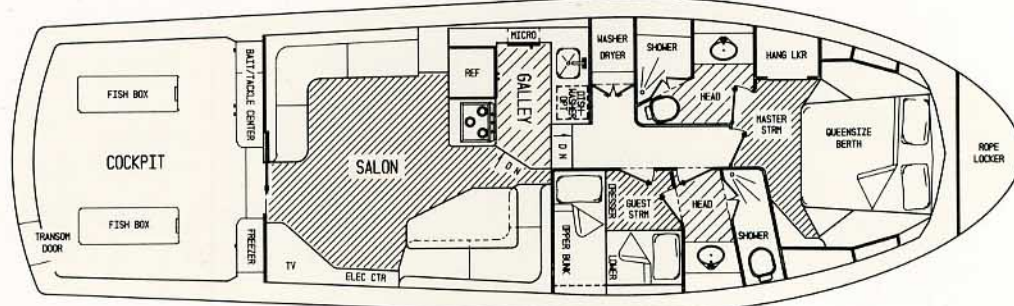
VIKING 48' CONVERTIBLE



TWO STATEROOM MODEL—PLAN A



THREE STATEROOM MODEL—PLAN B



LUXURY MODEL—PLAN C



viking
yachts
For those who know better.

Route 9 and The Garden State Parkway, New Gretna, NJ 08224, Tel: (609) 296-6000, Fax: (609) 296-3956

The right is reserved to make changes, without notice, at any time, in equipment, materials, prices and specifications. Line drawings and photos may show some optional equipment.